



DAN NOU KAZYE

The Seychelles Fisheries Authority Newsletter



TOP NEWS

- **SFA Supports First Ever Fisheries Business Management Course**
- **Comprehensive Baseline Study of Small-Scale Octopus Fishery**
- **Update on the Anse a la Mouche Project**



“Excellence in Sustainable Fisheries Management and Sector Development”

Message from the Chief Executive Officer for International Women's Day 2026

As we celebrate International Women's Day with the theme "Rights. Justice. Action. For ALL Women and Girls," SFA reaffirm it's commitment to creating an environment where every woman in our organization is respected, empowered, and given equal opportunities for growth and leadership.

This theme resonates deeply with us as we reflect on the remarkable women within SFA. We remain committed to promoting and safeguarding the rights of all women and girls, while continuing to empower our female staff to strengthen their expertise and lead with confidence, particularly in the fields of scientific research and sustainable fisheries management.

We recognise the importance of justice in reviewing and strengthening our systems to ensure fairness that recognises merit, promotes equity, and removes barriers that may hinder equal opportunities. Our commitment includes achieving equal representation in decision making processes, providing equitable career advancement opportunities, and fostering meaningful participation at every level of our organization, particularly in policy development, monitoring and enforcement.

Our dedication is reflected in our actions. Through stakeholder engagement, we actively mentor emerging leaders, invest in professional development, and support women in both operational and leadership roles across the fisheries value chain.

We also want to acknowledge the important contributions of those in supporting roles, including finance, human resources, IT and administration. Whether you are on the front lines or providing vital behind-the-scenes support, your efforts are crucial to strengthening our organization and enhancing our effectiveness.

On this International Women's Day, we celebrate not only your achievements but also your rights, leadership, and impact.



 Happy International Women's Day! 

International Women's Day 2026

To celebrate International Women's Day, SFA took a moment to recognize and honor the strength, determination, and achievements of the incredible women of our organization. As a gesture of appreciation, vanilla and chocolate cupcakes were shared to celebrate their ongoing contributions and the positive impact they make within the SFA community.



Empowering Women in Fisheries: SFA's Support to Business Training and AWFishNet Seychelles



A milestone has been reached in Seychelles' journey toward a more inclusive and dynamic blue economy, as twenty-three women proudly graduated from the first-ever Fisheries Business Management Course, a six-month programme designed to equip participants with the skills needed to thrive in fisheries entrepreneurship.

Among the twenty-three women, five were SFA's own staff. Two Research Technicians, Nelly Chang-Time, Emma Saffrance, two EMS Officers, Dania Adrienne, Verona Boniface and Catch Certification Officer Lisa Memee.

Seychelles Fisheries Authority (SFA) has been an indispensable partner in the success of the course, under the SeyCCAT project, which focuses on strengthening the capacity of women in artisanal fisheries post-harvesting. Through its technical expertise in fish

production, food safety, and aquaculture, SFA has helped participants transition from traditional practices to modern, standards-driven business operations.

A cornerstone of this collaboration has been the use of SFA's Product Development and Quality Assurance lab. There, the women gained practical, hands-on experience in value addition, transforming raw fish into high-quality products such as fish balls, nuggets, fingers, fish cakes, and kebabs. Their skills were showcased during the October 2025 Food Week, where their innovative products drew significant attention.

This momentum continued into March 2026, when AWFishNet Seychelles, led by Betty Mondon and Geva Remy, utilized the same facilities to process premium fish species, including Job, Varvara, Tuna, and Trevally.

These products were featured at a major exhibition held at L'Escale Resort Marina and Spa, where they stood out as a testament to the innovation and capability of Seychellois women in seafood production.

Behind this success is the dedicated mentorship of the Product Development and Quality Assurance team. Under their guidance, participants have developed the skills and confidence needed to not only meet professional standards but also embrace a culture of excellence and innovation

Through these collaborative efforts, the Fisheries Business Management Course has done more than train individuals—it has ignited a movement. The graduates are now equipped to add value, create businesses, and contribute meaningfully to the artisanal fisheries sector

Graduates of the First Ever Fisheries Business Management Course

Five SFA staff members, three from MCS and two from Fisheries Research, participated in the first ever Fisheries Business Management course. Two of the five share their experiences after completing the six-month training.

Nelly Chang-Time



I decided to enroll in the course after coming across an advertisement on WhatsApp that piqued my interest. Subsequently, I participated in the inaugural workshop held on 5th June, 2025, which served as a fantastic introduction to the program. The formal classes commenced on 12th June, 2025, and I was excited to dive deeper into the subject matter.

Throughout the course, I have experienced a significant expansion of my knowledge and perspective, particularly regarding the intricate balance between the scientific and business aspects of fisheries. This newfound understanding is invaluable as it will enhance my research efforts.

The curriculum has been rich and diverse, covering essential topics such as marketing strategies specific to the fisheries sector, the intricacies of business planning, and the fundamentals of financial management. I have also learned about effective sales techniques, food safety protocols, proper fish handling practices, and ways to add value to fisheries products, all of which are critical for boosting sustainability and profitability in the industry.

An especially rewarding aspect of the course has been the opportunity to engage in knowledge exchange with local fishers from Rodrigues. Sharing insights and experiences with them has enriched my understanding of the sector.

Hemma Safrance

I decided to enroll in the course after a colleague shared an engaging post about it on WhatsApp, which kindled my interest in its content and relevance to my career. Throughout the course, I gained a comprehensive understanding of several critical areas, including product promotion strategies, financial management principles, and best practices for effective business operations.

One of the highlights was the practical experience I obtained during a visit to a state-of-the-art cold storage facility. This firsthand exposure was invaluable; it deepened my understanding of product handling, storage techniques, and the intricacies of the supply chain. Observing the processes in action allowed me to connect classroom theory with real-world applications, which significantly enriched my learning experience.

Overall, this course has been instrumental in strengthening my knowledge and skills in fisheries business management. It has provided me with the tools to plan more effectively, manage resources efficiently, and make substantial contributions towards the sustainable development of fisheries in my professional work. The insights I gained have equipped me to approach challenges with a more informed perspective, enhancing my contributions to the industry.



Strengthening the Future of Seychelles' Octopus Fishery Through Science

The Fisheries Research Department of SFA has released its latest report to enhance understanding of the need for sustainable management of the country's small-scale octopus fishery. This report is based on a comprehensive baseline study completed in 2025. Titled "Determining Baseline Information for the Effective Management of the Seychelles' Small-Scale Octopus Fishery," the project offers vital insights into the biological, ecological, and socioeconomic aspects of the fishery.

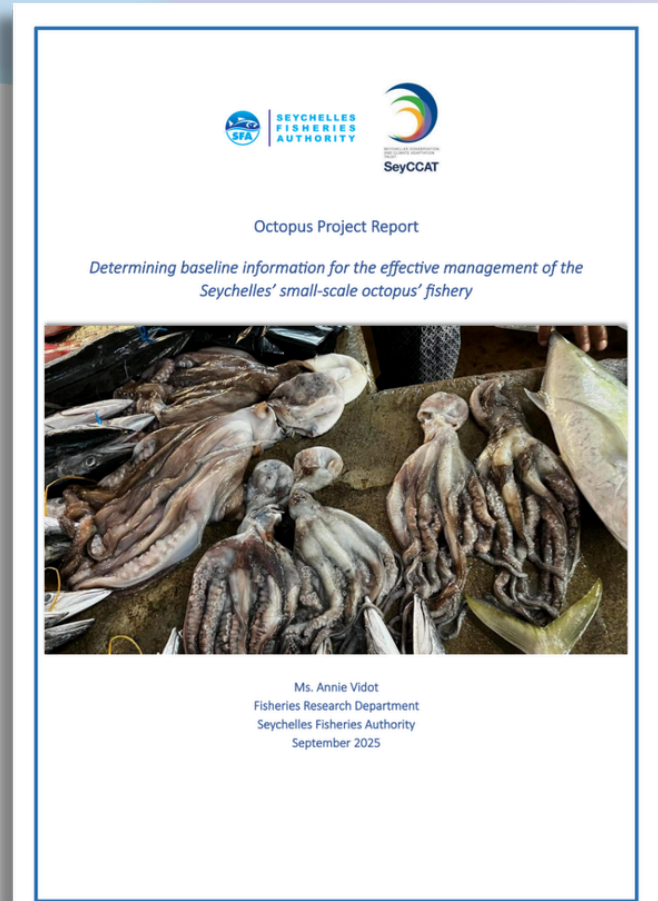
Octopus fishing in Seychelles has long supported coastal livelihoods, evolving from a subsistence activity into a commercially important sector. However, increasing demand, ease of access, and the absence of formal management measures have placed growing pressure on the resource. Concerns over sustainability, coupled with limited scientific data, highlighted the urgent need for a structured assessment.

With support from the Seychelles Climate Change Adaptation Trust (SeyCCAT), the study combined scientific research with active participation from fishers. Surveys were conducted across Mahé, Praslin, and La Digue, focusing on three key areas: socioeconomic conditions, catch and effort data, and habitat characteristics.

The findings revealed that the fishery remains largely male-dominated, with limited participation of women in harvesting activities. Most fishers rely heavily on octopus fishing for income, although many diversify into other fishing methods due to seasonal variability.

Biological sampling confirmed that the fishery is dominated by *Octopus cyanea*, challenging earlier assumptions about species composition. Over a 12-month monitoring period, more than four tonnes of octopus were recorded from 267 fishing trips, with catches peaking during favourable weather conditions.

Most octopuses caught were small to medium in size, with evidence suggesting that a majority had reached maturity. However, the relatively low number of larger individuals points to potential fishing pressure on the stock.



Catch rates and fishing effort also varied significantly across seasons and locations, with more remote areas showing higher productivity

Habitat surveys further revealed that octopus distribution is influenced by environmental factors such as depth, substrate type, and habitat complexity. While dens were widely available, octopus presence varied across sites, indicating complex habitat-use patterns.

The study indicates the need for better management. The majority of fishers engaged supported introducing measures such as licensing systems and minimum size limits to protect the resource. At the same time, concerns were raised about the open-access nature of the fishery, increasing fishing pressure, and limited stakeholder consultation.

The study underscores the importance of evidence-based management to ensure the long-term viability of Seychelles' octopus fishery. Key recommendations include introducing precautionary management measures such as licensing and size limits, strengthening monitoring and data collection systems, enhancing stakeholder engagement through co-management approaches, and conducting further research on reproduction, growth, and population dynamics.



Anse a la Mouche Fisheries Project on Track

Construction of the Anse à la Mouche fisheries infrastructure project is steadily advancing, with significant progress achieved since ground was broken in November 2025. The project, valued at SCR 6.7 million, is a key initiative aimed at strengthening support for Seychelles' artisanal fishery sector.

Spanning over 376 square metres, the development is now approaching 30 percent completion. Notably, foundation works for all three planned buildings have been successfully completed, marking an important milestone in the construction timeline.

The project comprises three main structures designed to enhance both fisheries operations and community services. The first building will house a modern fish market alongside a dedicated fish shop, providing improved facilities for fish handling and sales. The second building will accommodate a dive centre, a restaurant, and a surf school, contributing to both fisheries activities and the broader coastal economy. The third building

will include eight gear storage units as well as toilet facilities specifically for fishers, addressing longstanding needs for proper storage and sanitation.

Construction is being carried out by Allied Builders Construction Company, which is overseeing the development works on site.

Funded under the European Union Sectoral Support Agreement, the project forms part of ongoing efforts to invest

in fisheries infrastructure development for the artisanal fishery sector. This investment reflects a broader commitment to improving working conditions for fishers, enhancing value chains, and supporting sustainable fisheries practices.

Once completed, expected in November 2026, the Anse à la Mouche project is anticipated to significantly boost the efficiency and appeal of the site, benefiting fishers, vendors, and the wider community alike.



Strengthening Operational Planning and Patrol Coordination

SFA, in close collaboration with various international partners as part of the Joint Analytical Cell initiative, successfully conducted an extensive three-day capacity-building workshop from 24th to 26th March 2026, at the J&S Conference Room in Perseverance.

This significant training event brought together a diverse group of representatives from key maritime enforcement agencies, including the Seychelles Coast Guard, Seychelles Air Force, and Marine Police. The primary objective of the workshop was to reinforce inter-agency collaboration, particularly in the areas of monitoring, control, and surveillance (MCS) operations, which are critical for the protection and sustainable management of Seychelles' marine resources.

The workshop was meticulously designed to focus on three key areas: strengthening operational planning, enhancing the execution of patrol activities, and fostering a more analytical approach to maritime enforcement. Participants were introduced to structured analytical methodologies, prominently featuring the Joint Analytical Cell (JAC) approach, which aims to improve pre-operation analysis and craft intelligence-led patrol planning for more effective outcomes.

The first day of the training covered introductory sessions, current practices in pre-operation analysis, and the application of analytical methodologies to develop patrol briefs. Practical exercises enabled participants to apply these tools to real or simulated patrol scenarios.



The second day was dedicated to deepening analytical work, allowing participants to refine their assessments and strengthen their ability to interpret risk factors and operational data for more effective decision-making.

On the final day, participants presented pre-patrol briefs, engaged in discussions on live patrol support and reflected on the applicability of analytical methodologies within the SFA context. The workshop concluded with collaborative discussions on upcoming patrols and the development of preliminary analytical support plans.

This workshop marks a crucial advancement in enhancing Seychelles' maritime surveillance capabilities. By promoting intelligence-driven operations, fostering improved situational awareness, and strengthening coordination among enforcement agencies, this initiative significantly contributes to the sustainable management of Seychelles' precious marine resources and the effectiveness of its maritime security framework.



Educational Visit Highlights Opportunities in Aquaculture for Fishing Technology Students

On Friday, 20th March 2026, Year 1 learners enrolled in the Certificate in Fishing Technology programme at the Seychelles Maritime Academy (SMA), took part in an engaging educational visit to explore SFA's aquaculture facilities.

Accompanied by their lecturer and programme leader, Jimmy Portlouis, the group was introduced to the dynamic and evolving field of aquaculture. The visit aimed to broaden students' understanding of the sector while providing them with practical insights beyond the classroom.

Throughout the visit, learners had the opportunity to explore the wide range of possibilities that aquaculture offers. From employment opportunities across various technical and operational roles to the potential for entrepreneurship, students gained a clearer picture of how the industry contributes to the fisheries sector and the wider economy.

The visit also allowed students to engage with different departments within aquaculture, helping them better understand key processes and the foundational principles behind fish farming and aquatic resource management. This hands-on exposure is essential in bridging theoretical learning with real-world application.

Overall, the educational trip served as an important step in building practical knowledge and sparking interest among the learners. By experiencing the aquaculture environment firsthand, students are now better equipped and inspired to consider future careers in fisheries and aquaculture, fields that continue to grow in importance both locally and globally.



SFA Staff Enhance Digital Skills Through Microsoft Training



Two staff members from the IT Section, Mr Rondy Bristol and Mrs Annisha Lesperance, recently took part in a specialized training programme on Microsoft 365 Certified: Fundamentals, hosted by Cable & Wireless Seychelles. The training, which concluded with a certification examination, forms part of ongoing efforts to strengthen digital competencies within the Authority.

The course provided participants with a comprehensive introduction to Microsoft 365 tools and services, focusing on building foundational knowledge essential for modern workplace productivity. Despite covering technical concepts, the training was delivered in a clear and accessible manner, ensuring that even individuals new to the platform could easily follow and grasp the material.

The SFA representatives joined a diverse group of participants from several prominent organizations, including Mason's Travel, University of Seychelles, and Seychelles Port Authority, alongside the host organization. This mix of participants created an engaging learning environment, encouraging knowledge sharing and collaboration across sectors.

Designed specifically for individuals seeking to gain certification in Microsoft 365, the training successfully equipped attendees with the skills and confidence needed to navigate the platform effectively. For the SFA staff, the experience not only enhanced their technical capabilities but also contributed to their professional development, supporting the Authority's broader goal of improving efficiency through digital transformation.

By investing in such training opportunities, SFA continues to empower its workforce with the tools and knowledge required to adapt to evolving technological demands and deliver improved services to stakeholders.



A day in the life of ...

Fisheries Statistical Technician – Teryl Laporte



In this month's edition we meet Ms Teryl Laporte, who shares her daily experience as a Fisheries Statistical Technician. Ms. Laporte has been an Fisheries Statistical Technician within the Fisheries Statistics department for 7 years.

Q: What time do you usually arrive at work?

A: I typically arrive at work by 7:30 AM. Upon arriving, the first thing I do is check my emails to stay updated on any urgent matters or communications from my team and management.

Q: What is the first thing you do upon arriving? Can you walk us through your main duties and how you prioritize them?

A: As a Fisheries Statistical Technician, my primary responsibility is data capture for the purse seine fleet. I prioritize my tasks based on deadlines and the urgency of data requests. This involves collecting and entering data into our systems, ensuring accuracy and consistency.



Q: Are your daily tasks the same every day, or do they vary? If they vary, can you give examples of how your day might change?

A: My daily tasks can vary significantly. While I consistently engage in data capture from logbook, wellplan, and transshipment, the volume and type of data can change depending on what's required for the day.

Q: What time does your workday usually end?

A: I usually wrap up my workday by 3:30 PM.

Q: Does your role ever require you to work beyond normal hours?

A: While my hours are flexible, I sometimes need to stay longer to meet urgent deadlines or to handle unexpected tasks.

Q: What are your core responsibilities as a Fisheries Statistical Technician?

A: My core responsibility is accurately capturing and managing fisheries data for the purse seine vessels, such as Oman, Kenya, Korean, and Tanzania fleets.

Q: What part of your job requires the most attention?

A: The part of my job that requires the most attention is data verification. Ensuring that the data we collect is accurate and reliable is crucial for the success of our operations.

Q: What challenges do you face during a typical day?

A: A typical day presents several challenges, including managing tight deadlines, adapting to new regulations, or changes in data collection methods. Staying on top of these factors is essential to maintaining the quality of our data.



Health Education

What is Human Papillomavirus, (HPV)

Human papillomavirus (HPV) is a small, non-enveloped deoxyribonucleic acid (DNA) virus that infects skin or mucosal cells. The circular, double-stranded viral genome is approximately 8-kb in length.

HPV is one of the most significant cancer-causing infections globally. It is sexually transmitted, and most sexually active individuals will be infected at least once in their lifetime. HPV can affect the skin, genital area and throat.

Over 90% of men and 80% of women are exposed to HPV at some point. HPV usually goes away on its own without treatment. Some HPV infections cause genital warts. Others can cause abnormal cells to develop, which go on to become cancer.

HPV is responsible for cancers affecting:

- Cervix
- Vagina
- Anus
- Mouth and throat
- Penis

Types of HPV:

There are over 40 HPV types that infect the anogenital tract. These are grouped based on cancer risk:

- High-Risk Types: 16, 18, 31, 33, 35, 39, 45, 51, 52, 56, 58, 59, 68, 73, 82
- Probable High-Risk: 26, 53, 66
- Low-Risk Types: 6, 11, 40, 42, 43, 44, 70

Symptoms:

Most people will not have any symptoms from an HPV infection. The immune system usually clears HPV from the body within a year or two with no lasting effects.

Some HPV infections cause small rough lumps (genital warts). They may be painful, itchy or bleed or cause swollen glands.

HPV infection that does not go away on its own can cause changes to cervical cells, which lead to precancers that may become cervical cancer if left untreated. It usually takes 15–20 years for cervical cancer to develop after HPV infection.

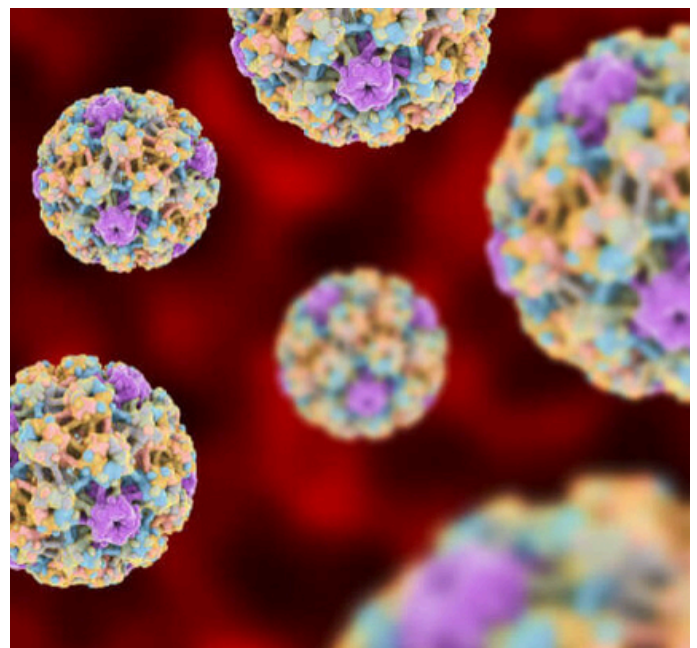
Prevention Strategies:

- HPV vaccination
- Correct and consistent condom use (reduces risk but does not fully prevent transmission)
- Delaying sexual activity among youth
- Practicing monogamy
- Avoiding tobacco use
- Regular cervical screening

HPV Vaccination:

The Gardasil vaccine helps protect against the most common cancer-causing HPV types.

- Gardasil 4 protects against types 6, 11, 16, and 18
- Administered in 2 doses, 6 months apart
- Introduced for Primary 6 girls in 2014 and Primary 6 boys in 2024



Key Message

HPV is common but preventable. Vaccination and regular screening are the most effective ways to reduce the risk of HPV-related cancers.

Skill of the month

Perfection Loop

Uses: The Perfection Loop Knot was described by Ashley as the Angler's Loop ([ABOK # 1017](#), p 188.) It is the easiest way to make a small loop in the end of a leader or tippet that will lie perfectly in line with the standing end. It is commonly used to join a Perfection Loop in the end of a fly line to a Perfection loop in a Leader using a "Loop to Loop" connection.

Tying it: The Perfection Loop Knot is most easily tied in the hand. Hold the first loop between finger and thumb. Wrap the second turn round the finger and thumb and then between the two loops. Tuck the second turn through the first, checking that the loop crosses and traps the end.

Alternative: It can also be tied through a fly or lure by passing the free end along the path shown in Frame 7 of the animation.

Tying a Perfection Loop

- 1 Make a loop with the tag end
- 2 Loop once more and bring the tag end to the middle of the 2 loops
- 3 Pass the 2nd loop through the 1st one
- 4 Hold and pull in both directions to tighten
- 5 Cut off excess tag end if any

101KNOTS

Advantages: The Perfection Loop Knot creates a stable loop that lines up neatly with the standing end. Using a "Loop to Loop" connection The Perfection Loop Knot allows for quick and convenient leader changes.



Healthy Tip

Eat a combination of different foods, including fruit, vegetables, legumes, nuts and whole grains. Adults should eat at least five portions (400g) of fruit and vegetables per day. You can improve your intake of fruits and vegetables by always including veggies in your meal; eating fresh fruit and vegetables as snacks; eating a variety of fruits and vegetables; and eating them in season. By eating healthy, you will reduce your risk of malnutrition and noncommunicable diseases (NCDs) such as diabetes, heart disease, stroke and cancer.

Test Your Skills

U Y T U J V K S R D N O J I K V T	fishing line	cast
R H A V O O D O P S I N K E R G W	tackle box	fish
T S C T C A S T O I U O X Y F N T	fisherman	hook
K I K W N W V M F H N L H D W A V	spinner	reel
P F L T O G B B U T U N Q L I M Q	license	lure
B T E U X R R L D R A Q E D T R C	catfish	net
S A B O F E M O E S R X H R H E Z	bobbers	rod
Q C O R Y S R S T A R C K S P H J	sinker	
W G X T E N L A Q A T E I Q G S S	worms	
M O X L H E N C V A O F B V M I F	trout	
J V E P G C W W C S K B V B E F H	catch	
M E H C X I E V N U U V Q N O G C	bait	
R R W O M L D Y M B J M D A A B M	boat	
N X W B Y C B G B A I T O Z E I E		
X C G R I C M J R M T N Y E R V R		
F I S H I N G L I N E W R P Q D E		
S Z M T P M N C Q M N K R D X Q E		

Contact the PR Team to book a slot in the SFA newsletter for any internal communication and awareness, including:

- Department events and trainings
- Processes and procedures
- Upcoming committee and club events etc...



**SEYCHELLES
FISHERIES
AUTHORITY**

Get In Touch

Fishing Port | P.O. Box 449 |
Victoria | Seychelles
info@sfa.sc
+248 4670300

Hotlines

Port Control / Inspection
(Undersized): 2716300
VMS Breakdown: 2525421